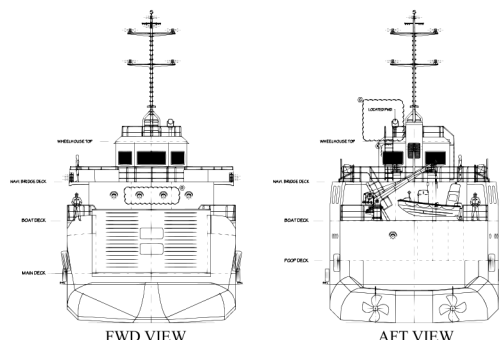
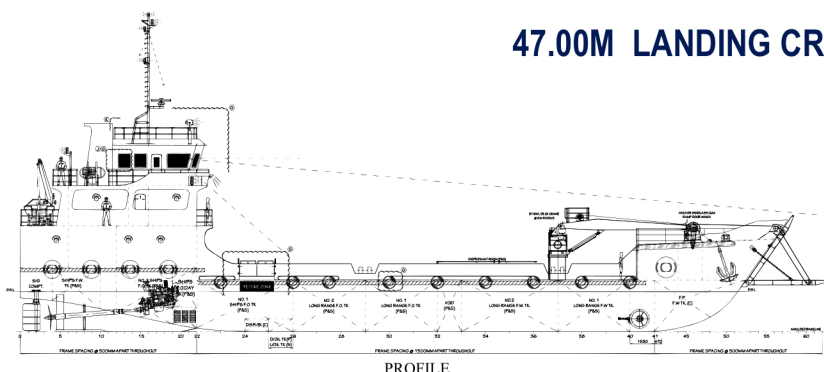




47.00M LANDING CRAFT



PRINCIPAL PARTICULARS

Hull No.	: BJ 105
IMO No.	: 9972581
Length Overall	: 47.00m
Length B.P.	: 43.72m
Breadth MLD.	: 10.90m
Depth/Design Draft (MLD.)	: 3.20m/2.50m
Design Deck Load	: 5 tonnes/m ²
Rampdoor Size (L x W)	: 5.075m x 7.600m (approx.)
Deck Area	: 240m ² approx.
Deadweight	: 471.088 tonnes
Accommodation	: 18 Men
Classification	: RINA

MACHINERY / PROPULSION

Main Engine	: 2 x Cummins KTA19M3 600hp @ 1800rpm
Gear Box	: 2 x Twindisc MGN86EL ratio 4.48:1
Main Generator	: 2 x Cummins 6CT8.3-DM 110ekW @ 1500rpm
Propeller	: 2 x 4 blades, 1600mm propeller dia. SUS316L shaft
Steering Gear	: 2 x Palmarine PEH2502-2P, 2.5TM
Bow Thruster	: 1 x Veth VT-240 4 Bladed 980mm propeller dia. ~3t thrust
Bow Thruster Engine & Gear Box	: 1 x Cummins QSB6.7M, 350hp @2800rpm c/w Twindisc MG5050 gear box

CARGO CAPACITY

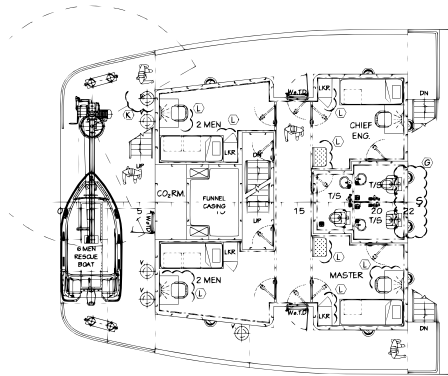
Fuel Oil	: 121.0m ³
Fresh Water	: 141.0m ³
Long Range Fesh Water	: 262.0m ³
Long Range Fuel Oil	: 296.0m ³

NAVIGATION / COMMUNICATION EQUIPMENTS

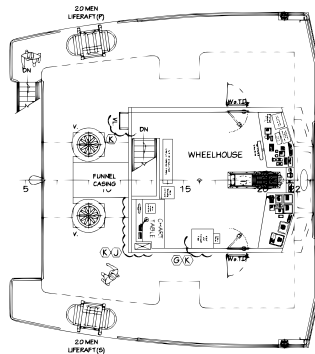
GMDSS A1 + A2 Radio System	: 1 x GM-800 MF/HF, 1 x GM- 600 VHF/FM, 1 x Sailor 6130 LRIT System
Radar	: 1 x Kodan MDC-7912P
EPIRB	: 1 x Jotron TRON 60AIS
SART	: 1 x Samyung SAR-9
Echo Sounder	: 1 x Simrad S3009
AIS	: 1 x Kodan KAT-330
GPS Compass	: 1 x Kodan KGC-300
NAVTEX Receiver	: 1 x JMC NT-1800
GPS	: 1 x Kodan KGP-922
Speed Log	: 1 x Simrad SAL R1a
Auto Pilot	: 1 x TMQ AP9
Anemometer	: 1 x Marinelite MI9000P
VHF Radio Telephone	: 2 x Samyung STV-160
BNWAS	: 1 x Alphontr AlphaBNWAS
PA System	: 1 x Vingtor-Stentofon CTB-10

DECK EQUIPMENTS

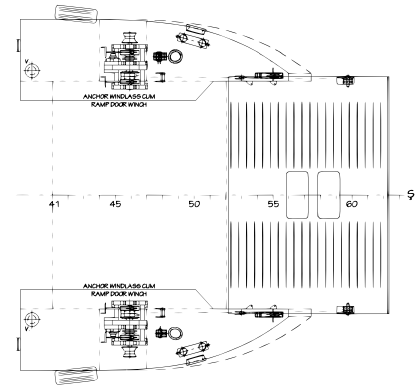
Anchor & Chain	: 2 x Stockless anchor 1140kg x 30mm dia. grade 2 stud link chain
Hydraulic Ramp & Anchor Windlass	: 2 sets Electro-hydraulic, 5T @ 12m/min, 15T (static) Ramp drum: 24mm dia. x 150ft Line pull: 5t @ 7m/min at 1st layer



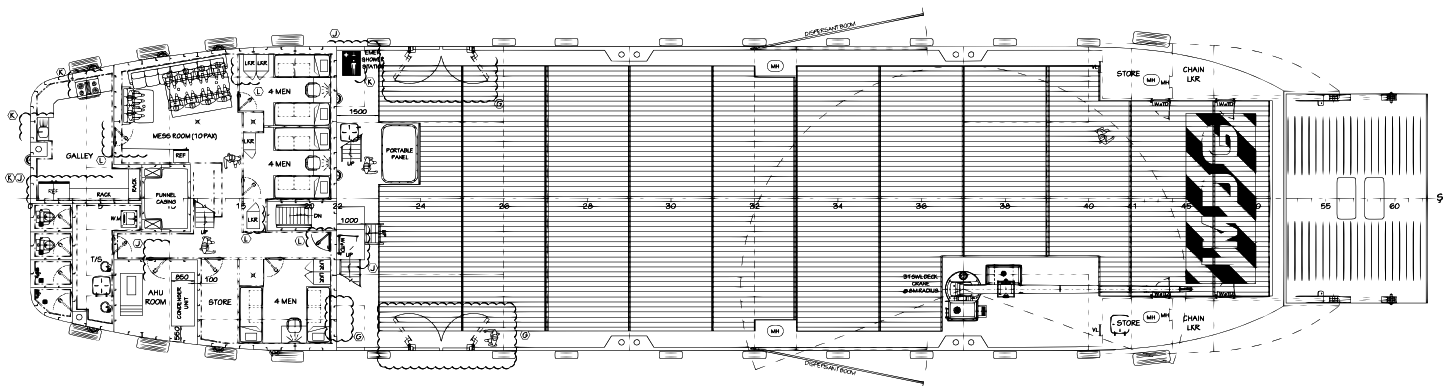
BOAT DECK



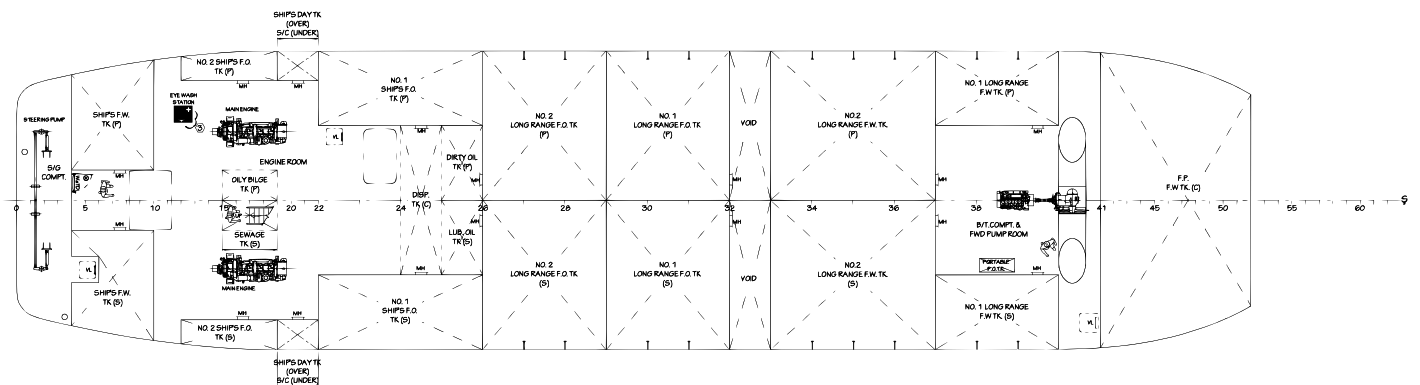
WHEELHOUSE



FORECASTLE DECK



MAIN DECK PLAN



BELOW MAIN DECK PLAN

For more information, please feel free to contact us at
Lot 285, Kuala Baram Industrial Estate, Kuala Baram-
Brunei Border Road, 98008 Miri, Sarawak, Malaysia.

Tel: +6085-605 888 | Fax: +6085-605 755
Email: admin@berjayadockyard.com

www.berjayadockyard.com